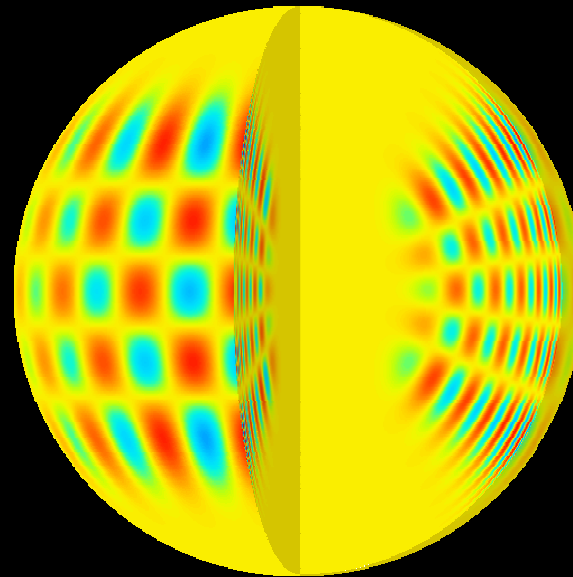


Angular-momentum coupling through the tachocline

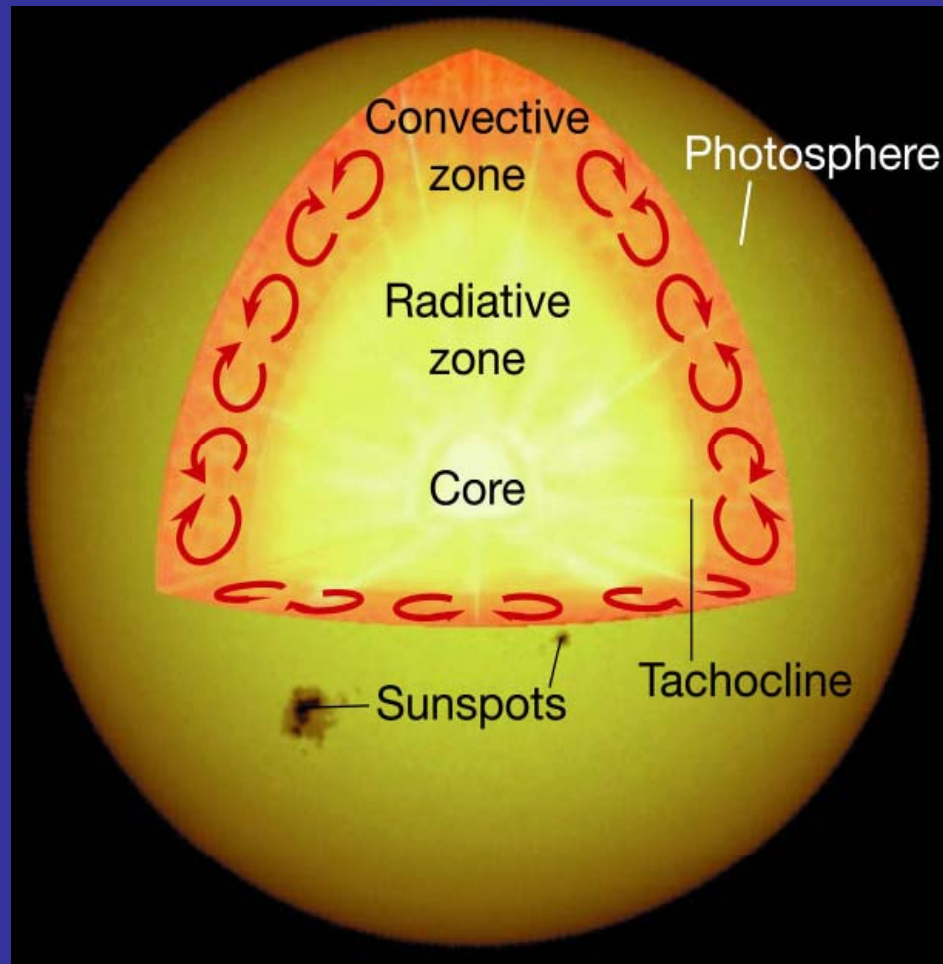
Douglas
Gough

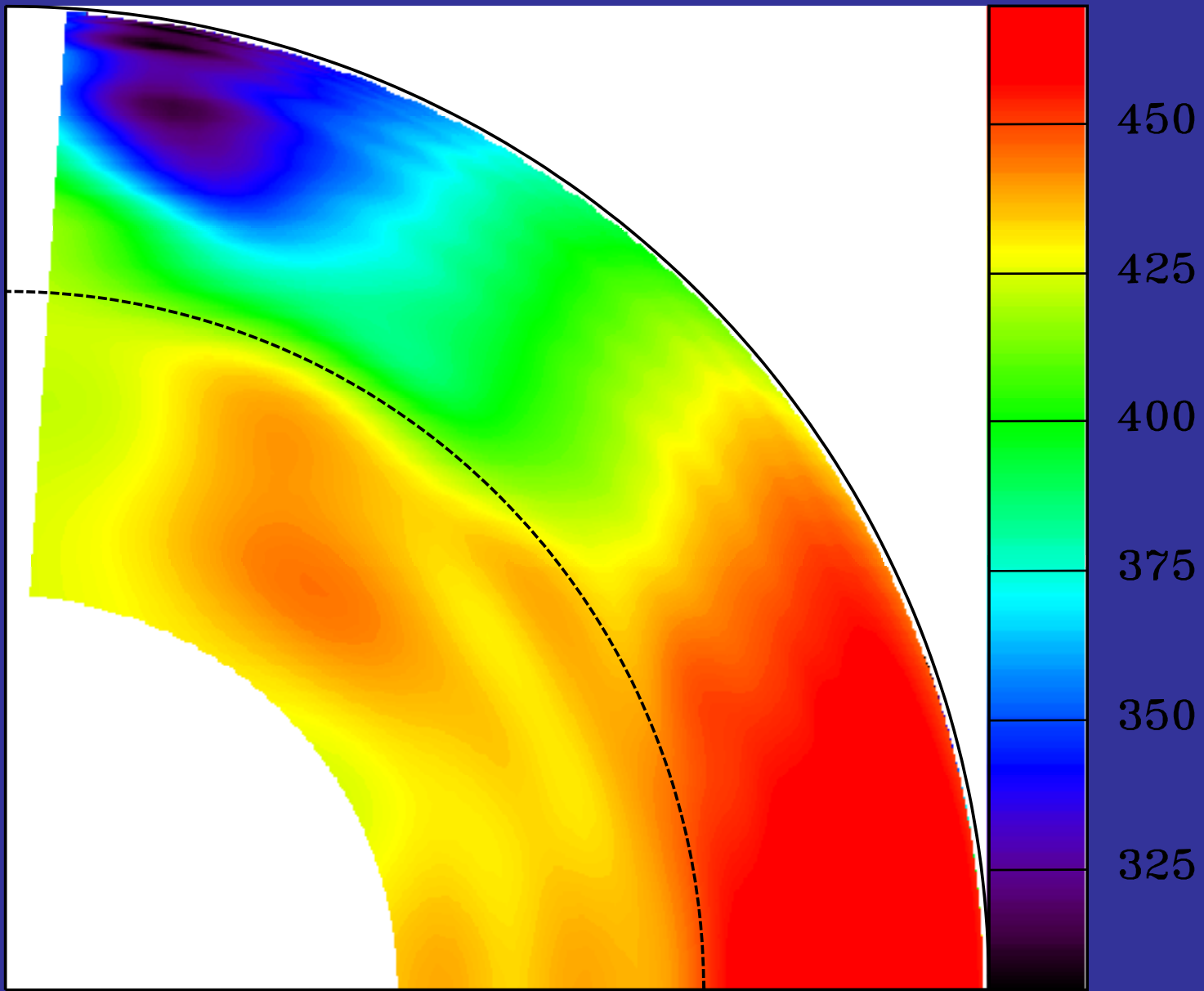


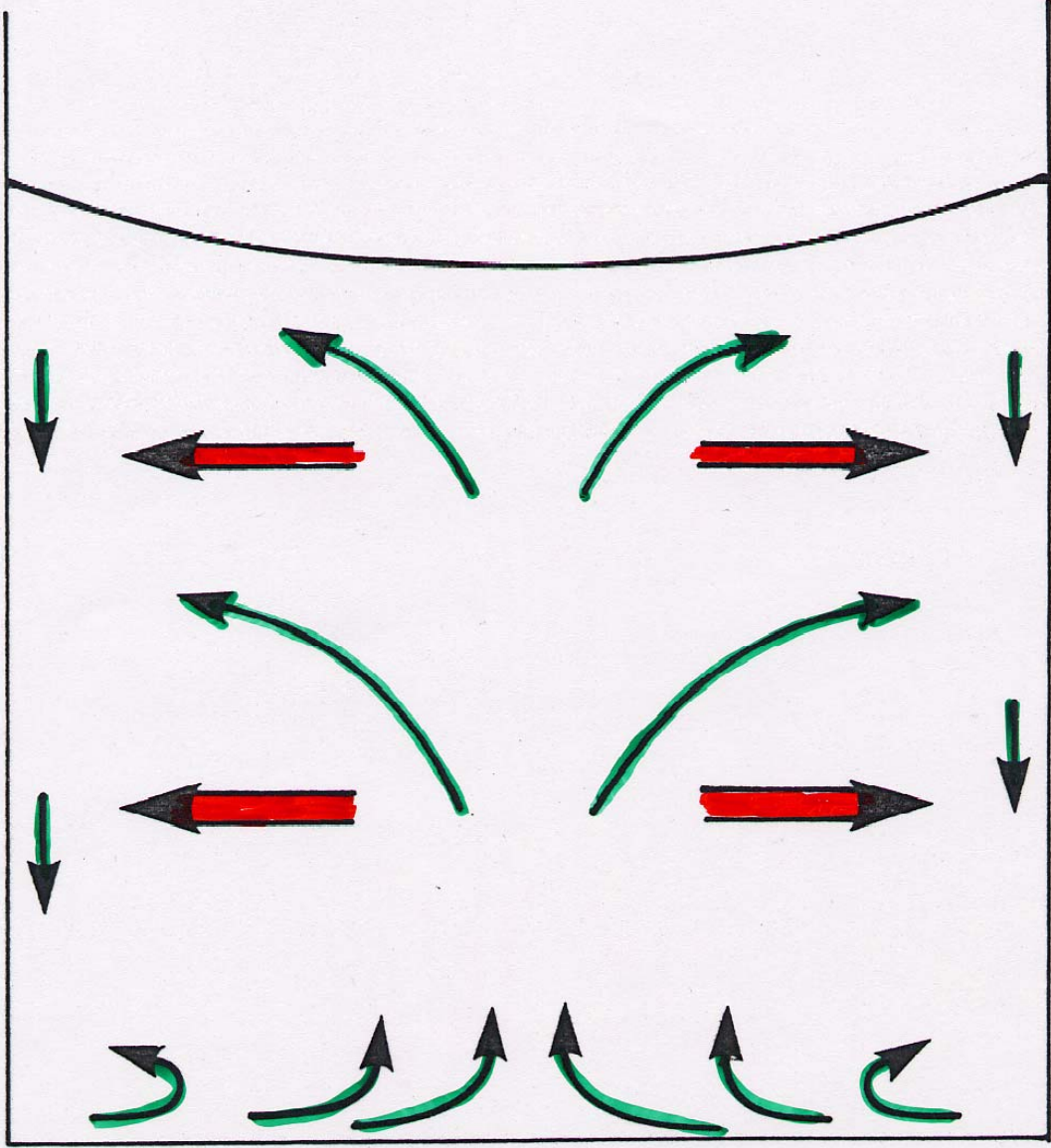
Evershed Meeting at IIA, 2 Dec 2008

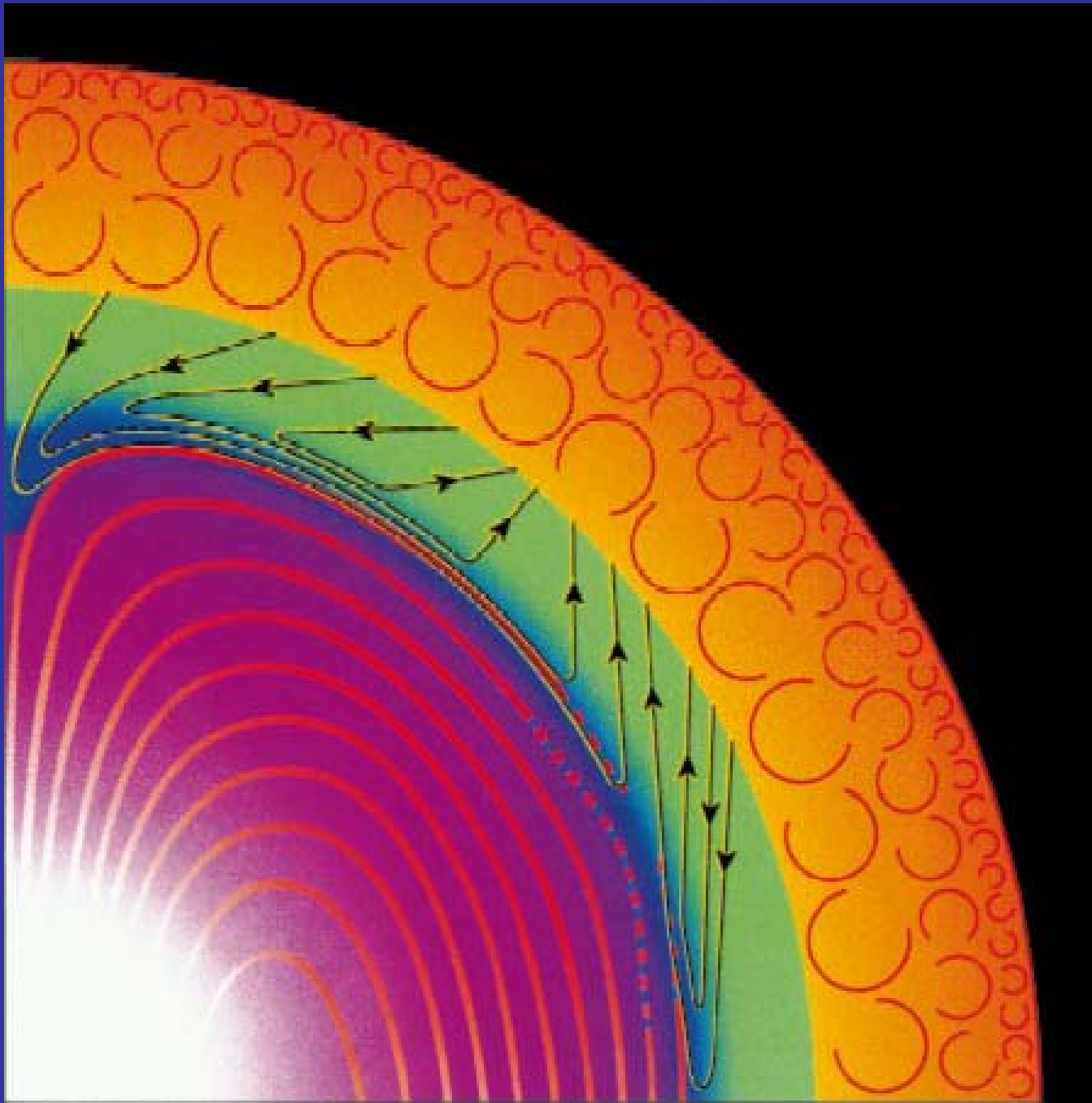


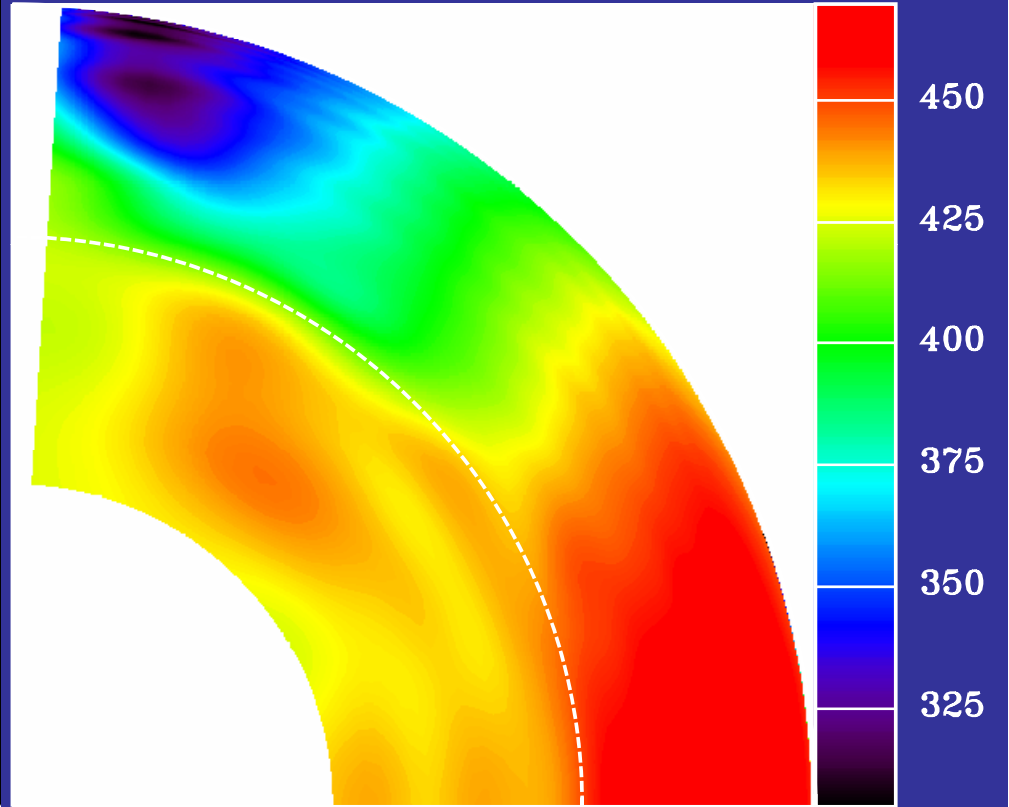
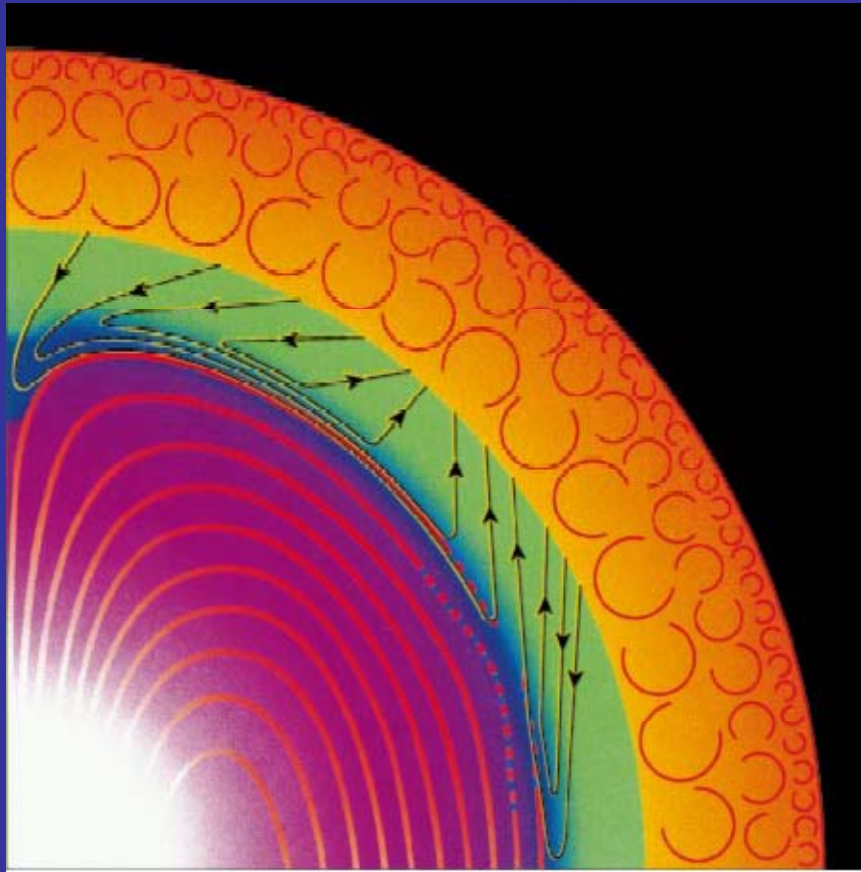
Solar Structure



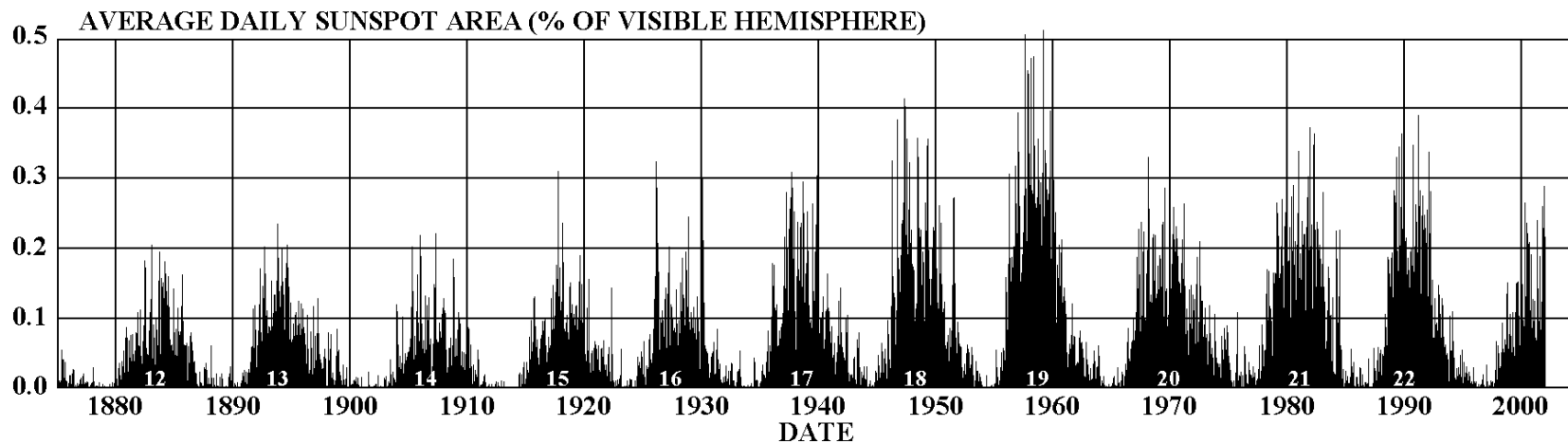
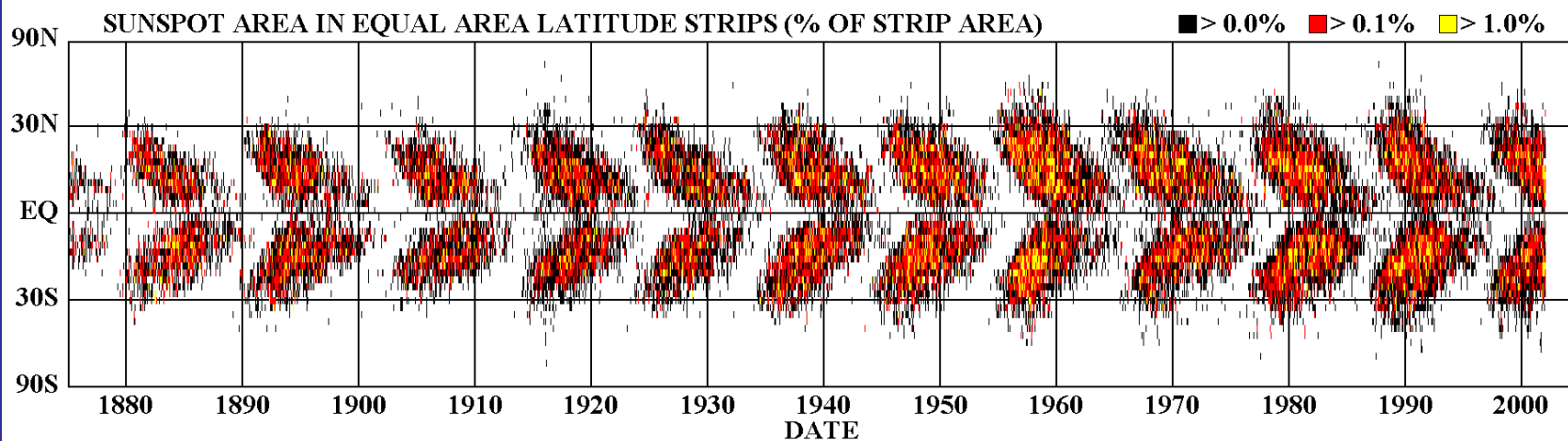








DAILY SUNSPOT AREA AVERAGED OVER INDIVIDUAL SOLAR ROTATIONS



Relative sound speed and density differences between the Sun and a theoretical reference model

