



Magnetic Coupling between the Interior and the Atmosphere of the Sun

“Centenary Commemoration of the discovery of the Evershed Effect”



John Evershed
(1864 - 1956)

Venue : Indian Institute of Astrophysics, Bangalore
December 2 - 5, 2008

Invited Speakers:

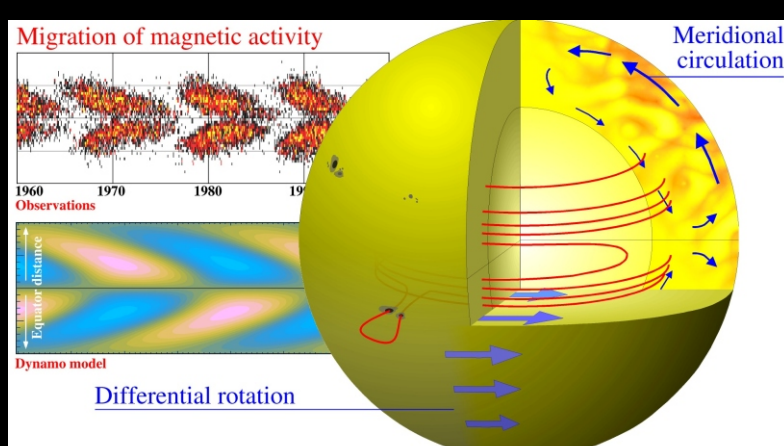
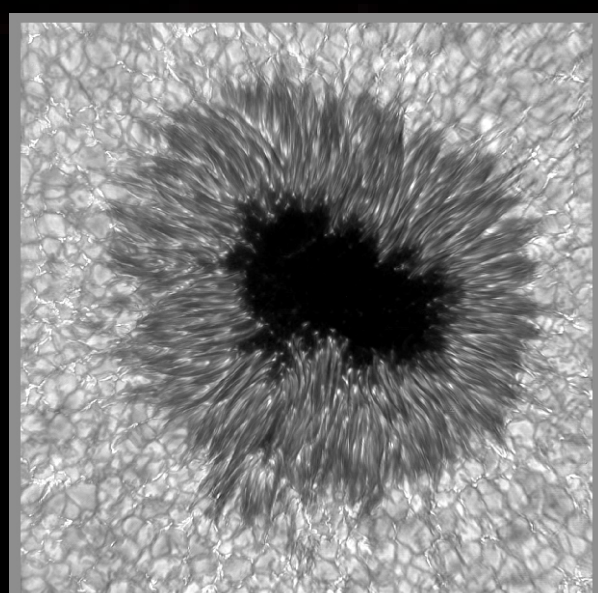
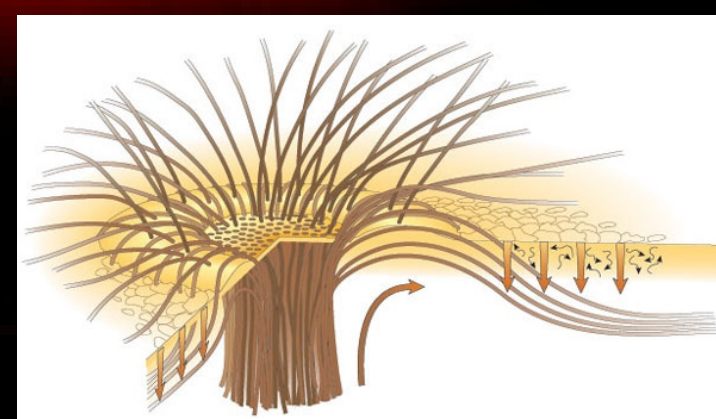
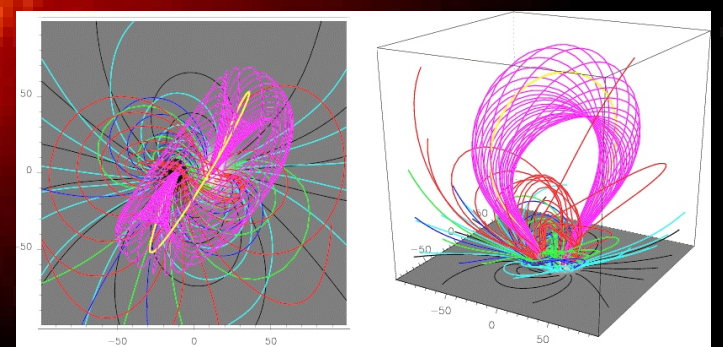
S. Brun
P. Charbonneau
B. De Pontieu
T. G. Forbes
N. Gopalswamy
D. Gough
J. A. Klimchuk
A. G. Kosovichev
B. W. Lites
D. Longcope
E. Marsch
D. Nandy
A. Nordlund
C. Parnell
J. Sanchez Ameida
J. H. M. M. Schmitt
K. Shibata
O. Steiner
J. O. Stenflo
J. H. Thomas
J. Trujillo Bueno
S. Tsuneta
N. O. Weiss
J. -P. Zahn

SOC:

P. Cally (Australia)
M. Carlsson (Norway)
A. R. Choudhuri (India)
L. Dame (France)
R. Erdelyi (UK)
S. S. Hasan (India) (Chair)
J. Karpen (USA)
J. Leibacher (USA)
C. Mandrini (Argentina)
E. R. Priest (UK) (Co-Chair)
R. J. Rutten (Netherlands)
T. Sakurai (Japan)
J. H. M. M. Schmitt (Germany)
S. K. Solanki (Germany)
J. Wang (China)

Topics:

- Magnetic field generation and transport mechanisms
- Magnetic field measurements
- Sunspot and active regions
- Magnetic coupling through the atmosphere
- Eruptive phenomena
- Solar-stellar connections



Contact:

LOC
Indian Institute of Astrophysics
IInd Block, Koramangala,
Bangalore - 560034, India.
www.iiap.res.in/ever
ever@iiap.res.in